

BOYS

K - 8th Grade Required

| Khaki Pleated Front Parker Perfect Pants | | | |
|---|------------------|-------|---------|
| 60040 | Elastic | 3-7 | \$26.75 |
| 60050 | Slim w/ elastic | 3-7 | \$26.75 |
| 60060 | Regular w/Adjust | 8-20 | \$29.75 |
| 60070 | Slim w/Adjust | 8-20 | \$29.75 |
| 60080 | Husky w/Adjust | 25-38 | \$34.75 |
| 60090 | Mens | 30-48 | \$35.75 |

| Khaki Parker Perfect Pull-on Pants | | | |
|---|---------|-------|---------|
| 60430 | Pull-on | 00-12 | \$23.75 |

| Navy Knit Shirts w/ Monogram | | | |
|-------------------------------------|----------|--------|---------|
| 27366 | Youth-SS | XXS-XL | \$22.75 |
| 27367 | Adult-SS | S-3XL | \$25.75 |
| 27368 | Youth-LS | XXS-XL | \$25.25 |

| Blue Oxford Shirt w/ Monogram | | | |
|--------------------------------------|-----------|-------|---------|
| 32382 | Boy-SS | 4-20 | \$24.75 |
| 32384 | Men-SS | S-3XL | \$27.75 |
| 32385 | Boy-LS | 4-20 | \$27.75 |
| 32383 | Husky -SS | 8-20 | \$26.75 |



BOYS

K - 8th Grade Optional

| Khaki Pleated Front Parker Perfect Shorts | | | |
|--|------------------|-------|---------|
| 63030 | Elastic | 3-7 | \$23.75 |
| 63040 | Slim w/ elastic | 3-7 | \$23.75 |
| 63050 | Regular w/Adjust | 8-20 | \$26.75 |
| 63060 | Slim w/Adjust | 8-20 | \$26.75 |
| 63070 | Husky w/Adjust | 25-38 | \$31.75 |
| 63080 | Mens | 30-48 | \$32.75 |

| Khaki Parker Perfect Pull-on Shorts | | | |
|--|---------|-------|---------|
| 63430 | Pull-on | 00-12 | \$17.75 |



St. Catherine #1335

GIRLS

K - 4th Grade Required

| Navy/Olive Plaid Jumper | | | |
|--------------------------------|-----------|--------|---------|
| 3267 | Girl | 2-20 | \$48.75 |
| 3287 | Half size | 4-/18- | \$50.75 |



5th - 8th Grade Required

| Navy/Olive Plaid Skort | | | |
|-------------------------------|-----------|--------|---------|
| 5421 | Girl | 2-20 | \$41.75 |
| 5422 | Half size | 4-/18- | \$43.75 |
| 5423 | Junior | 1-27 | \$50.75 |
| 5389 | Tween | 8-20 | \$30.00 |



K - 8th Grade Required

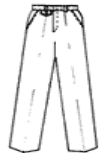
| Monogrammed Oxford Blouse | | | |
|----------------------------------|---------|-------|---------|
| 20164 | Girl SS | 6-16 | \$24.75 |
| 20165 | Miss SS | XS-XL | \$27.75 |
| 20166 | Girl LS | 6-16 | \$27.75 |
| 20167 | Miss LS | XS-XL | \$30.75 |

K - 8th Grade Optional

| Navy Pleated Shorts | | | |
|----------------------------|--------------------|--------|---------|
| 63420 | Pull-on | 1-12 | \$17.75 |
| 554 | Regular w/ elastic | 3-6X | \$19.75 |
| 580 | Regular | 7-16 | \$22.75 |
| 705 | Slim | 7-16 | \$22.75 |
| 581 | Half size | 6-/18- | \$26.75 |
| 597 | Junior | 3-27 | \$25.75 |



| Navy Pleated Slacks | | | |
|----------------------------|--------------------|--------|---------|
| 60420 | Pull-on | 1-12 | \$23.75 |
| 576 | Regular w/ elastic | 3-6X | \$25.75 |
| 564 | Regular | 7-16 | \$28.75 |
| 566 | Slim | 7-16 | \$28.75 |
| 586 | Half size | 6-/18- | \$32.75 |
| 567 | Junior | 3-27 | \$31.75 |



| White Knit w/ Monogram | | | |
|-------------------------------|----------|--------|---------|
| 27369 | Youth-SS | XXS-XL | \$22.75 |
| 27370 | Adult-SS | S-3XL | \$25.75 |
| 27371 | Youth-LS | XXS-XL | \$25.25 |



| White Cotton Knit w/ Monogram | | | |
|--------------------------------------|----------|--------|---------|
| 27372 | Youth-SS | XXS-XL | \$26.75 |
| 27373 | Adult-SS | S-3XL | \$29.75 |

BOYS and GIRLS

K - 8th Grade Required



| Navy Sweatshirt w/ Monogram | | | |
|--------------------------------------|-------|-------|---------|
| 42864 | Youth | XS-XL | \$19.75 |
| 42865 | Adult | XS-XL | \$21.75 |
| Navy Polar Fleece Jacket w/ Monogram | | | |
| 87268 | Youth | XS-XL | \$43.75 |
| 87269 | Adult | XS-XL | \$48.75 |



Please visit our website at www.ParkerSU.com and register your email for updates on sales and promotions!

Shop On-Line!

www.parkersu.com

Free Shipping on all Web Orders over \$100

CLEARANCE OLD MONOGRAM

| Navy Sweatshirt w/ Monogram | | | |
|--------------------------------------|----------|--------|---------|
| 4176 | Youth | XS-XL | \$9.50 |
| 4182 | Adult | XS-XL | \$10.50 |
| Navy Polar Fleece Jacket w/ Monogram | | | |
| 8733 | Youth | XS-XL | \$22.00 |
| 8734 | Adult | XS-XL | \$24.75 |
| Navy Knit Shirts w/ Monogram | | | |
| 7342 | Youth-SS | XXS-XL | \$11.00 |
| 7343 | Adult-SS | S-3XL | \$13.00 |
| 6858 | Youth-LS | XXS-XL | \$12.00 |
| Blue Oxford Shirt w/ Monogram | | | |
| 6076 | Boy-SS | 4-20 | \$10.75 |
| 6077 | Men-SS | S-3XL | \$12.00 |
| 6078 | Boy-LS | 4-20 | \$11.50 |
| White Knit w/ Monogram | | | |
| 3979 | Youth-SS | XXS-XL | \$11.00 |
| 3980 | Adult-SS | S-3XL | \$13.00 |
| 3981 | Youth-LS | XXS-XL | \$12.00 |
| White Cotton Knit w/ Monogram | | | |
| 6967 | Youth-SS | XXS-XL | \$11.00 |
| 6969 | Adult-SS | S-3XL | \$12.75 |

Please visit our summer store in Beaumont on the Monsignor Kelly campus from July 19 -Aug. 12.

*Store Hours:
Tues./Wed./Fri. 10-5
Thurs 10-7
Sat 10-2*

Please call the Houston store for more information.

St. Catherine School

School #1335
www.parkersu.com



Ask about monogram items on sale for you school !!!

School Year 2011-2012

STORE HOURS

| Regular Hours | Summer Hours |
|------------------|-------------------|
| Closed Sun/Mon | July 18-August 15 |
| Tue/Wed/Fri 10-5 | M/T/W/F 10-6 |
| Thursday 10-7 | Thursday 10-7 |
| Saturday 10-2 | Saturday 10-3 |

Closed for these 2011-12 Holidays

| | | | |
|------------------|------------------|-----------------|------------------|
| Memorial Day | May 28-30, 2011 | Christmas | Dec. 23-26, 2011 |
| Independence Day | July 4, 2011 | New Year's 2011 | Dec. 31, 2011 |
| Labor Day | Sept. 5, 2011 | | |
| Thanksgiving | Nov. 24-27, 2011 | | |

713-681-4045
Fax 713-681-9050
1110 N. Post Oak Suite #140
Houston, TX 77055
store01@parkersu.com

Parker